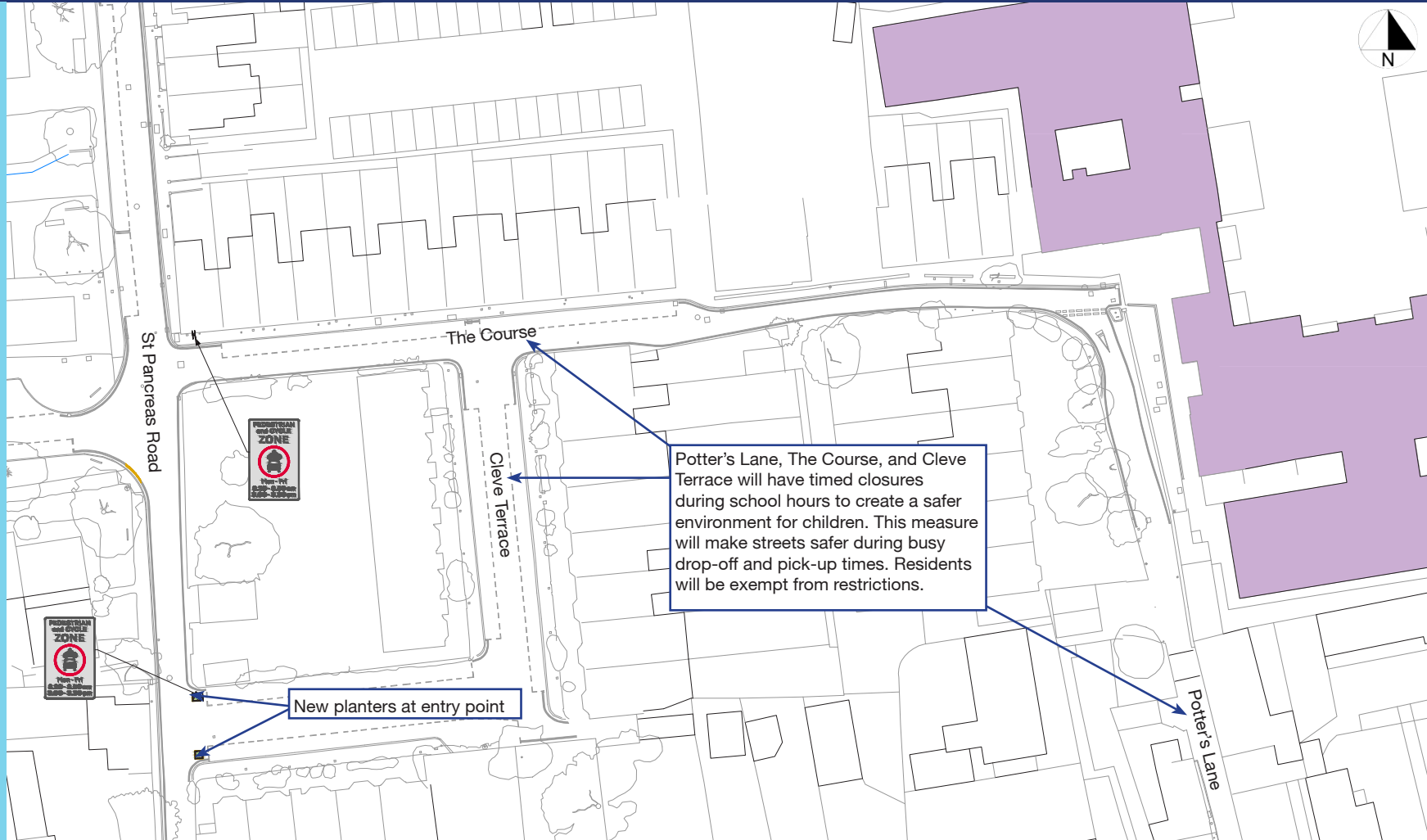


East Sussex School Streets - Southover CE Primary School, Lewes

These measures were collaboratively designed with the community to develop streets that are safer and more welcoming for the school and wider community. The changes will help reduce vehicle speeds and promote safer driving and active travel journeys.

Access restrictions

Introducing access restrictions to enhance safety around the school entrance. Residents will be exempt from the restrictions. Through-traffic and school traffic will be restricted around the school entrance areas at peak school hours (Mon-Fri), 8:15-9:00am and 3:00-3:30pm, to improve safety.



Key:	
	Kerb
	Paving
	Bollard
	Road sign
	Existing line marking
	Proposed white line marking

Example of planter



East Sussex School Streets - Southover CE Primary School, Lewes

These measures were collaboratively designed with the community to develop streets that are safer and more welcoming for the school and wider community. The changes will help reduce vehicle speeds and promote safer driving and active travel journeys.

Footway Improvements on Southover High Street across the junction with Potters Lane

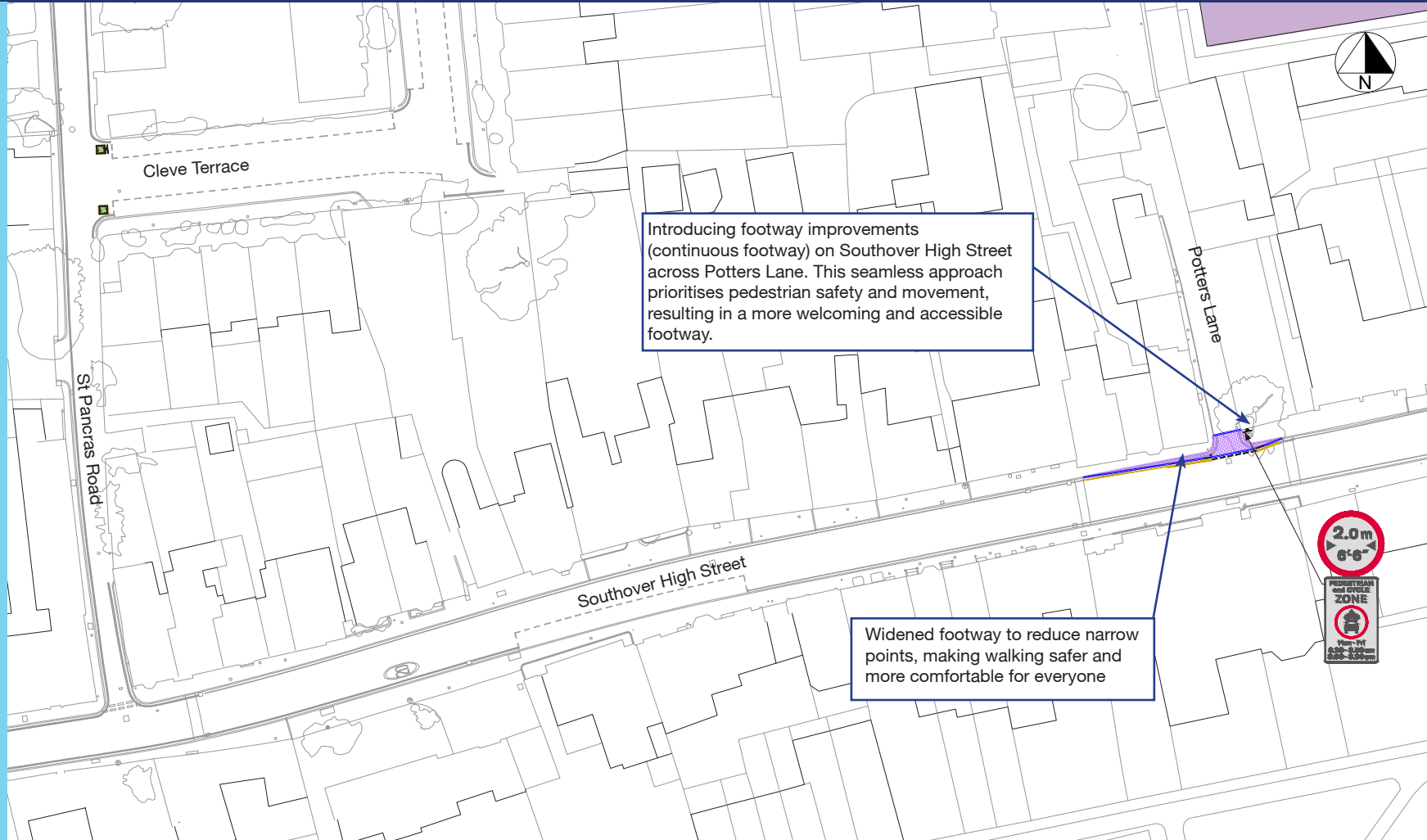
Footway improvements include having a continuous footway on Southover High Street to improve pedestrian comfort and safety. A continuous footway is an uninterrupted footway that extends across a side road clearly indicating to drivers that pedestrians have priority. This approach enhances safety but also makes walking, cycling and wheeling a more pleasant experience.

Widened footway

New wider footway, making walking safer and more enjoyable.

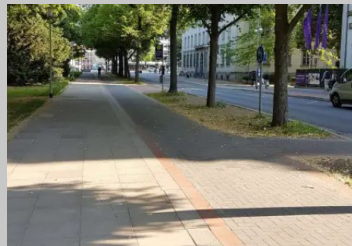
Access restrictions

Introducing access restrictions to enhance safety around the school entrance. Residents will be exempt from the restrictions. Through-traffic and school traffic will be restricted around the school entrance areas at peak school hours (Mon-Fri), 8:15-9:00am and 3:00-3:30pm, to improve safety.



Key:	
	Kerb
	Paving
	Bollard
	Road sign
	Existing line marking
	Proposed white line marking

Example of widened footway



Example of continuous footway



East Sussex School Streets - Langney Primary Academy, Eastbourne

These measures were collaboratively designed with the community to develop streets that are safer and more welcoming for the school and wider community. The changes would also help reduce vehicle speeds and promote safer driving and active travel journeys.

Footway Improvements

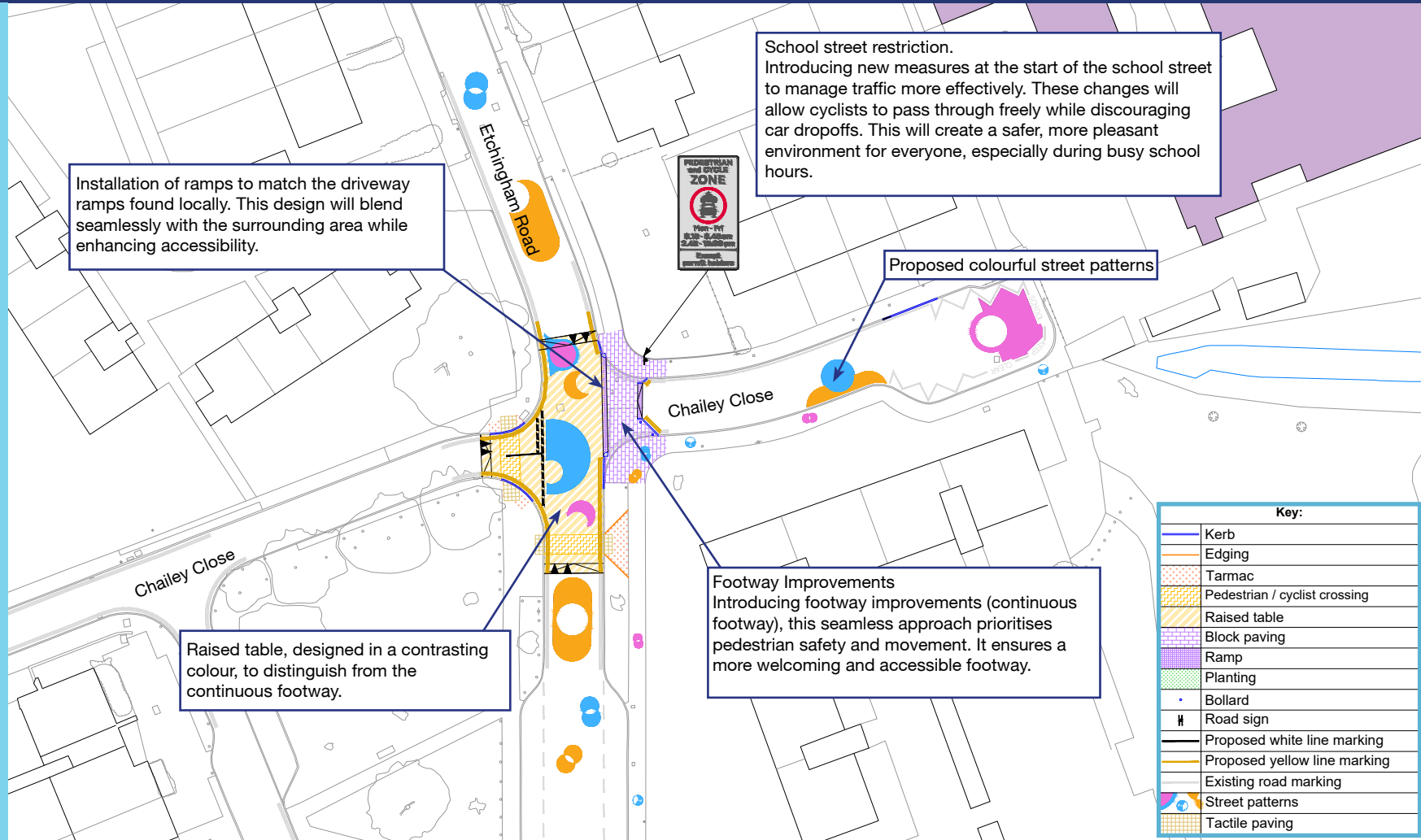
Including a ramp (setts ramp), similar to those found in local driveways, which offers multiple benefits. This will improve accessibility, making the area inclusive for all users.

Raised Table

Introducing a raised table, designed in a contrasting colour to stand out from the continuous footway. This will enhance the visual distinctiveness of the area but also offers significant benefits such as improved visibility for pedestrians. The raised design helps in slowing down vehicle speeds in areas with higher numbers of pedestrians, making it safer for everyone to navigate.

Access Restrictions

Residents will be exempt from the restrictions. Through traffic and school traffic will be restricted around the school entrance areas at peak school hours (Mon-Fri), 8:15-8:45am and 2:45-3:30pm, to improve safety.



Installation of ramps to match the driveway ramps found locally. This design will blend seamlessly with the surrounding area while enhancing accessibility.

School street restriction. Introducing new measures at the start of the school street to manage traffic more effectively. These changes will allow cyclists to pass through freely while discouraging car dropoffs. This will create a safer, more pleasant environment for everyone, especially during busy school hours.

Proposed colourful street patterns

Footway Improvements Introducing footway improvements (continuous footway), this seamless approach prioritises pedestrian safety and movement. It ensures a more welcoming and accessible footway.

Raised table, designed in a contrasting colour, to distinguish from the continuous footway.

Example of a raised table



East Sussex School Streets - Langney Primary Academy, Eastbourne

These measures were collaboratively designed with the community to develop streets that are safer and more welcoming for the school and wider community. The changes would also help reduce vehicle speeds and promote safer driving and active travel journeys.

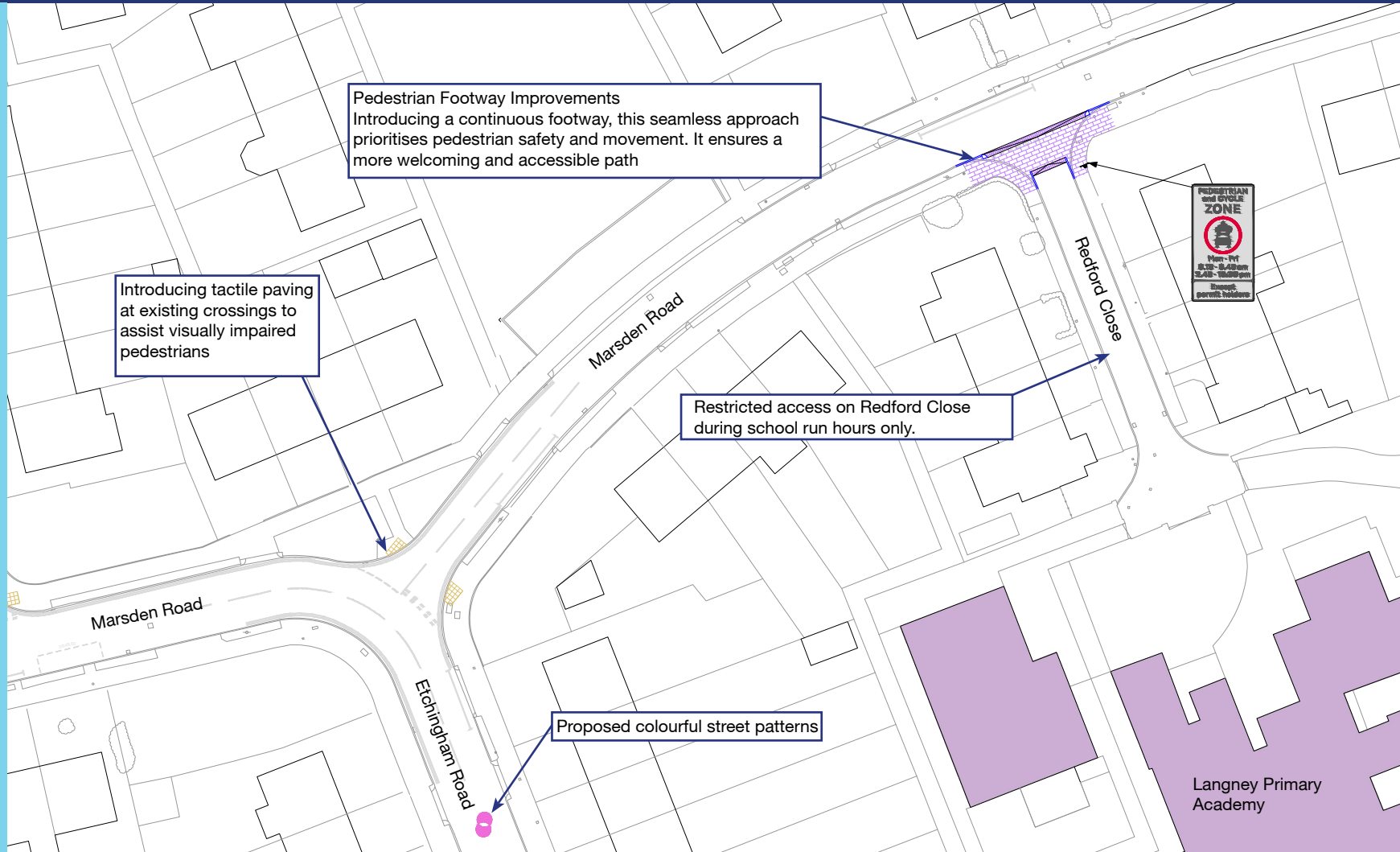
Access Restrictions

Introducing access restrictions to enhance safety around the school entrance. Residents will be exempt from the restrictions. Through traffic and school traffic will be restricted around the school entrance areas at peak school hours (Mon-Fri), 8:15-8:45am and 2:45-3:30pm, to improve safety.

Footway Improvements (Continuous Footway)

Introducing footway improvements including a continuous footway on Marsden Road across the junction with Redford Close to improve pedestrian comfort and safety. This will provide a wider path for pedestrians. The continuous footway will smoothly merge crossings with the footway, clearly indicating to drivers that pedestrians have priority.

Key:	
	Kerb
	Edging
	Tarmac
	Pedestrian / cyclist crossing
	Raised table
	Block paving
	Ramp
	Planting
	Bollard
	Road sign
	Proposed white line marking
	Proposed yellow line marking
	Existing road marking
	Street patterns
	Tactile paving



Pedestrian Footway Improvements
Introducing a continuous footway, this seamless approach prioritises pedestrian safety and movement. It ensures a more welcoming and accessible path

Introducing tactile paving at existing crossings to assist visually impaired pedestrians

Restricted access on Redford Close during school run hours only.

Proposed colourful street patterns



East Sussex School Streets - All Saints CE Primary, Bexhill - Turkey Road

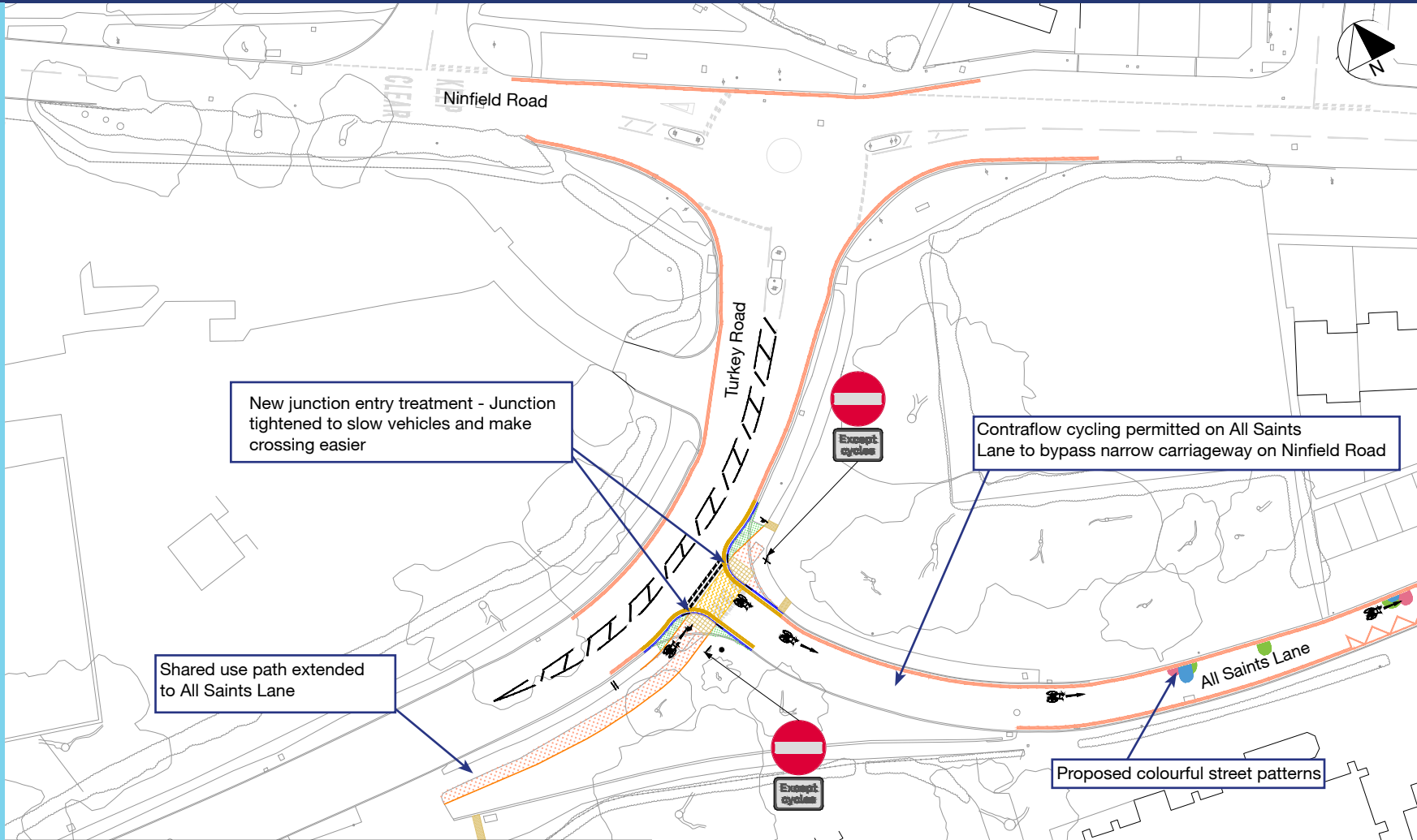
These measures were collaboratively designed with the community to develop streets that are safer and more welcoming for the school and wider community. The changes will help reduce vehicle speeds and promote safer driving and active travel journeys.

Upgraded Crossing

A new entry treatment will be provided at the entrance to All Saints Lane from Turkey Road. This will incorporate an improved crossing point and enhance pedestrian safety. Pedestrians will experience shorter crossing distances, while the coloured crossing will provide a clear, visible path that alerts drivers to the presence of pedestrians. An example of a junction entry treatment is shown in the photo below.

Contraflow Cycling

Changes will be made to allow people to cycle in both directions along All Saints Lane. This will be a signed route that provides a safer and more direct option for many journeys rather than Ninfield Road, including for people accessing the school, church and nursery. This includes an extension to the shared use path on Turkey Road.



Example of junction entry treatment



Example of school street patterns



Key:	
	Proposed kerb
	Proposed edging
	Proposed asphalt
	Proposed uncontrolled buff coloured crossing
	Proposed planting
	Proposed road sign
	Proposed white line marking
	Proposed road marking, yellow
	ESCC Proposed road marking, yellow
	Existing road marking
	Proposed thermoplastic
	Proposed blister / corduroy tactile paving

East Sussex School Streets - All Saints CE Primary, Bexhill - All Saints Lane

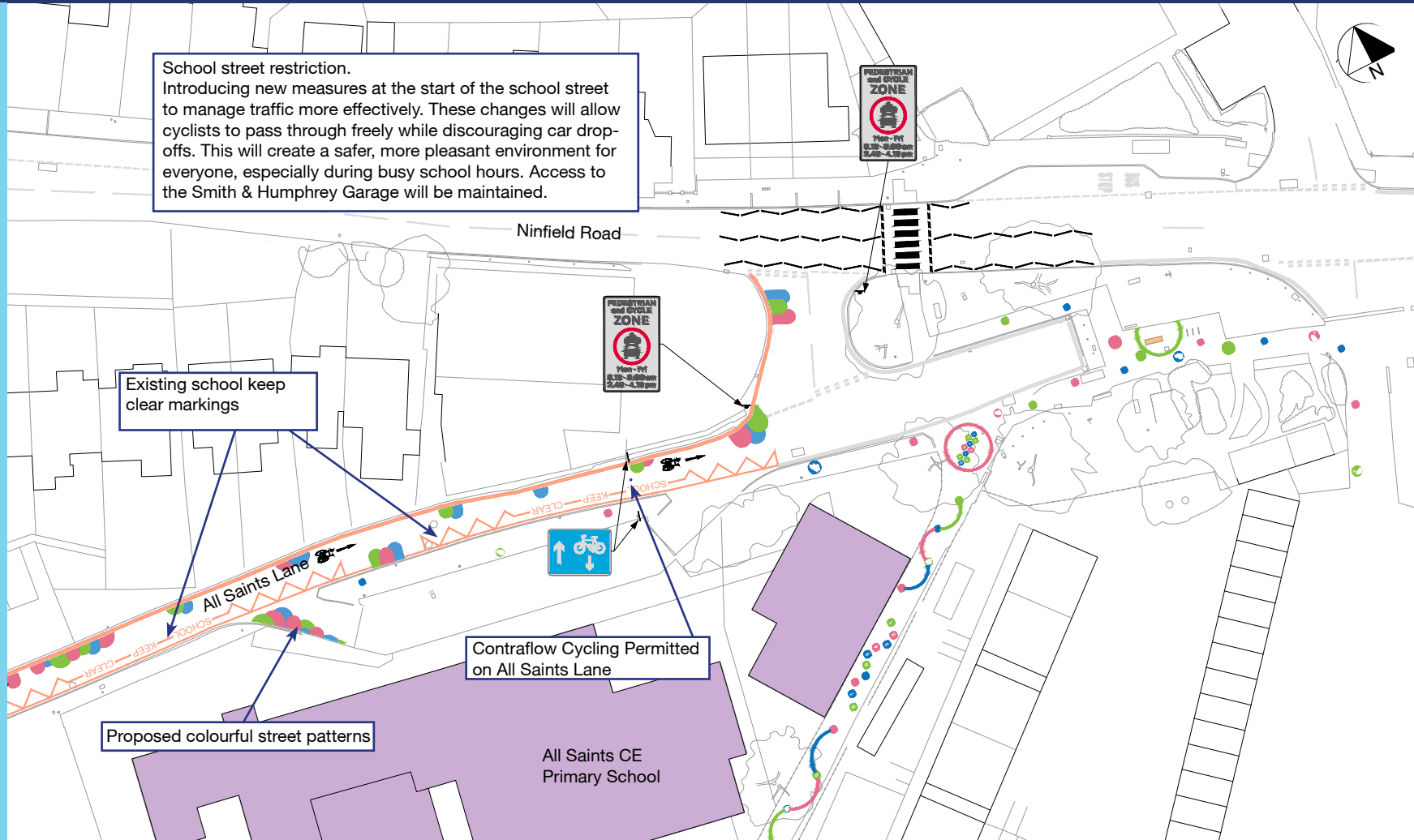
These measures were collaboratively designed with the community to develop streets that are safer and more welcoming for the school and wider community. The changes will help reduce vehicle speeds and promote safer driving and active travel journeys.

Access restrictions

Introducing access restrictions to enhance safety around the school entrance. Residents will be exempt from the restrictions. Through-traffic and school traffic will be restricted around the school entrance areas at peak school hours (Mon-Fri), 8:15-8:45am and 2.50-4.10pm, to improve safety.

Street Patterns

As this is a school streets scheme, street patterns designed in collaboration with the school community are set to transform the areas around the school into welcoming spaces for students, residents, and the local community. These colourful street patterns will enhance the safety of walking wheeling and cycling, especially in the vicinity of the school premises.



School street restriction.
Introducing new measures at the start of the school street to manage traffic more effectively. These changes will allow cyclists to pass through freely while discouraging car drop-offs. This will create a safer, more pleasant environment for everyone, especially during busy school hours. Access to the Smith & Humphrey Garage will be maintained.

Existing school keep clear markings

Proposed colourful street patterns

Contraflow Cycling Permitted on All Saints Lane

All Saints CE Primary School

Example of street patterns



Key:	
	Proposed kerb
	Proposed edging
	Proposed asphalt
	Proposed uncontrolled buff coloured crossing
	Proposed planting
	Proposed road sign
	Proposed white line marking
	Proposed road marking, yellow
	ESCC Proposed road marking, yellow
	Existing road marking
	Proposed thermoplastic
	Proposed blister / corduroy tactile paving